

CHECKPOINTLX - MSM HIV TESTING AND LINKAGE TO CARE IN LISBON

Maria José Campos¹, Eugénio Teófilo², Hugo Machado¹,
João Brito¹, Julio Esteves¹, Luis Mendão¹, Ricardo Abrantes¹,
Ricardo Fuertes¹, Tiago Rodrigues¹, Nuno Pinto¹.

¹ CheckpointLX - GAT ² Centro Hospitalar de Lisboa Central

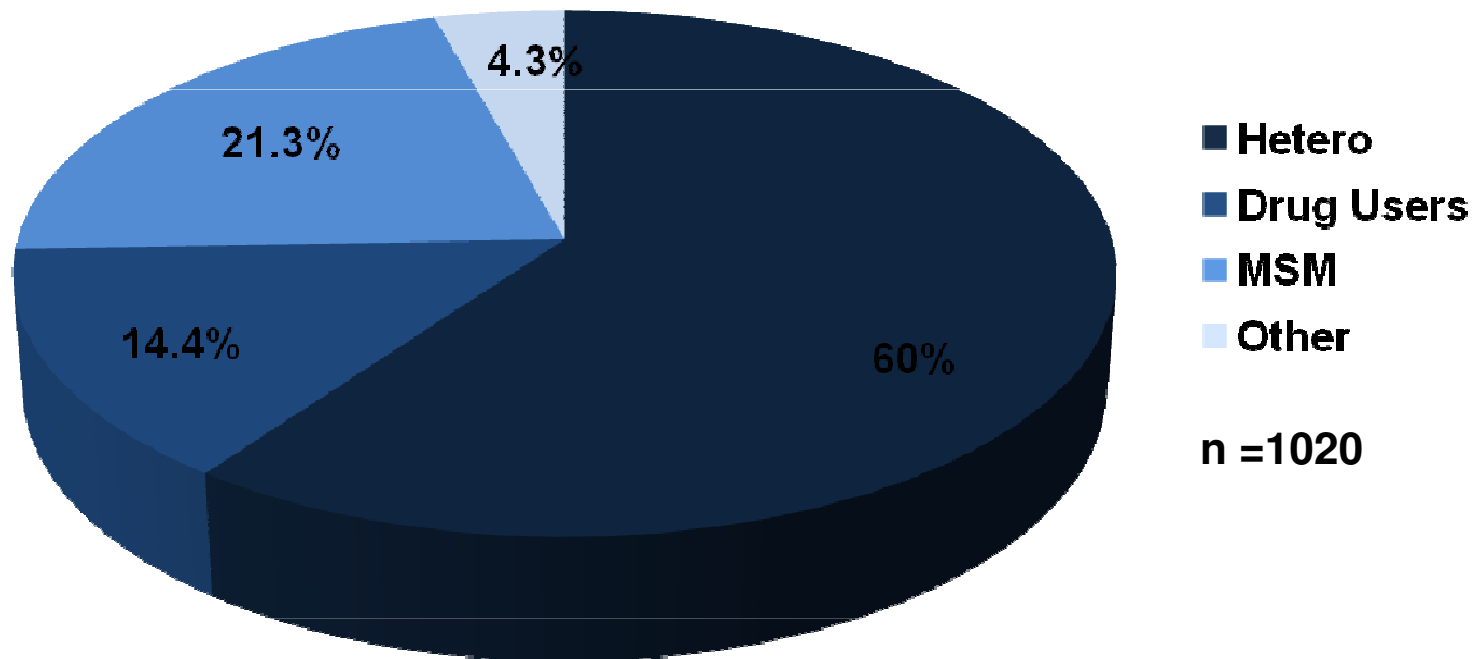


GAT

Grupo Português de Activistas
sobre Tratamentos de VIH/SIDA
Pedro Santos

NEW HIV INFECTIONS IN PORTUGAL 2010 BY REPORTED MODE OF TRANSMISSION

SOURCE INSA 2010



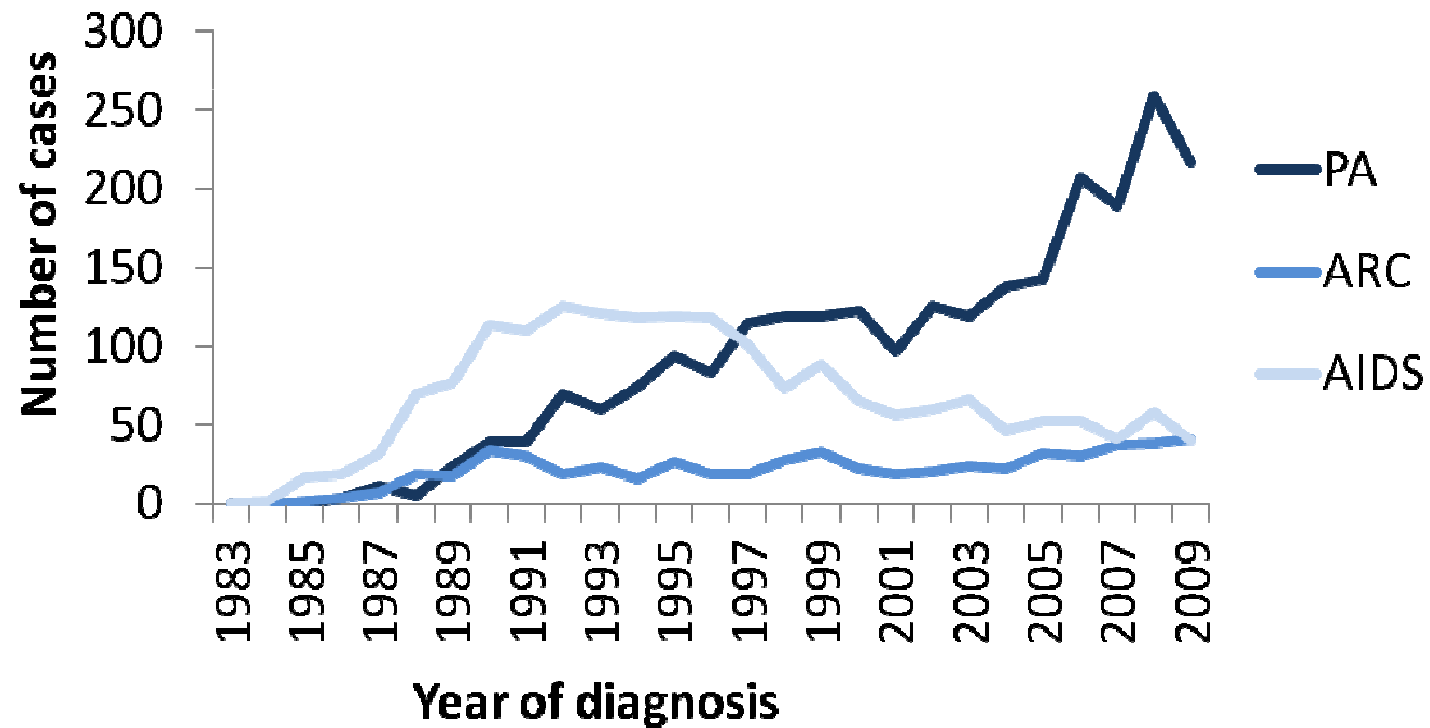
People living with HIV 2010 - 39 347

RAPID TEST
RESULTS IN 30 MINUTES
ANONYMOUS
CONFIDENTIAL
FREE



NEW HIV INFECTIONS IN PORTUGAL - MSM

SOURCE INSA 2010

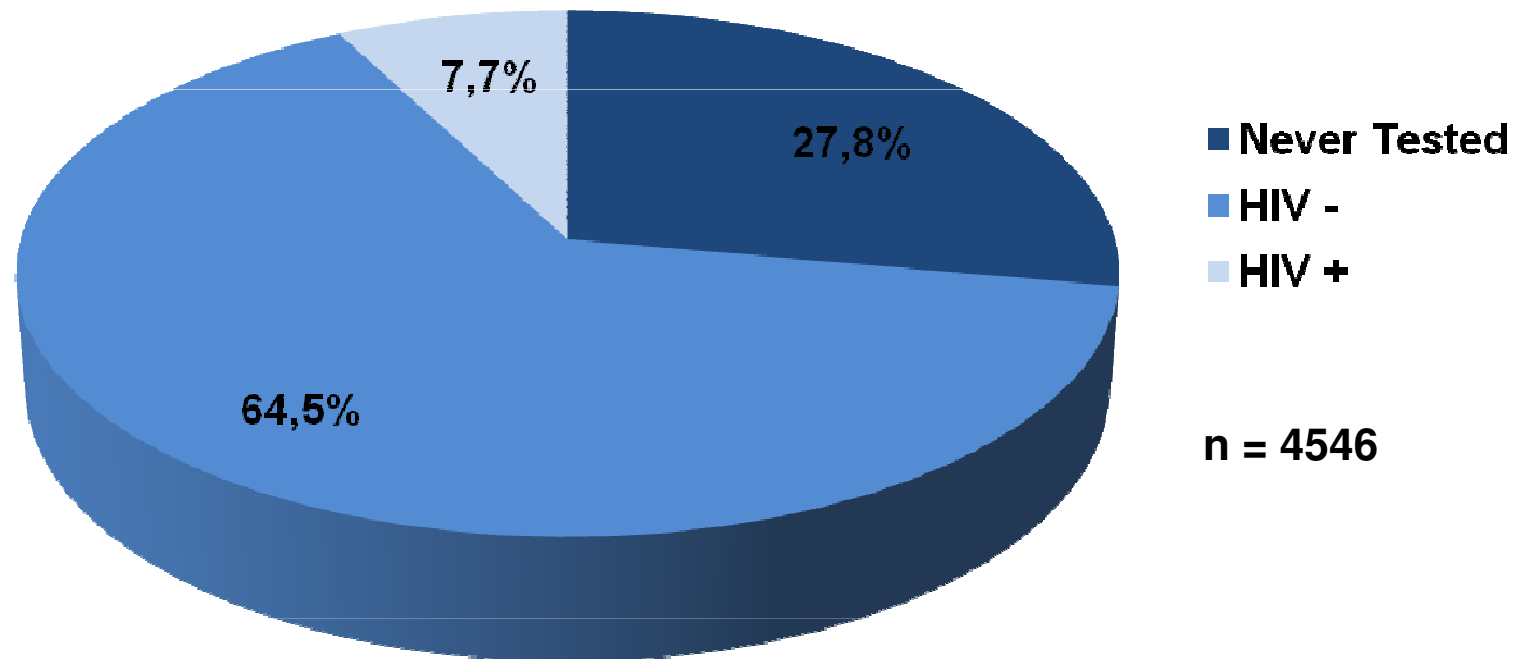


RAPID TEST
RESULTS IN 30 MINUTES
ANONYMOUS
CONFIDENTIAL
FREE



HIV TESTING IN MSM IN PORTUGAL 2010

SOURCE EMIS (Carvalho C et al: Description of Portuguese EMIS participants. FEMP, Stockholm 2011)



RAPID TEST
RESULTS IN 30 MINUTES
ANONYMOUS
CONFIDENTIAL
FREE



CHECKPOINTLX

OBJECTIVES

Increase early detection of HIV infection among MSM

Provide specific information on HIV and Sexually Transmitted Infections (STIs)

Provide advice, peer support and referral to ensure effective access to the National Health Service of MSM with reactive results.



RAPID TEST
RESULTS IN 30 MINUTES
ANONYMOUS
CONFIDENTIAL
FREE



CHECKPOINTLX

METHODS

Target group - men who have sex with men (MSM)

Located in a district of Lisbon (Príncipe Real) area of socialization of MSM

Promoted in bars, saunas, outdoor cruising areas and gay – organized social on-line networks

Offers an anonymous, confidential and free rapid HIV screening

Counseling is offered by peers: trained MSM

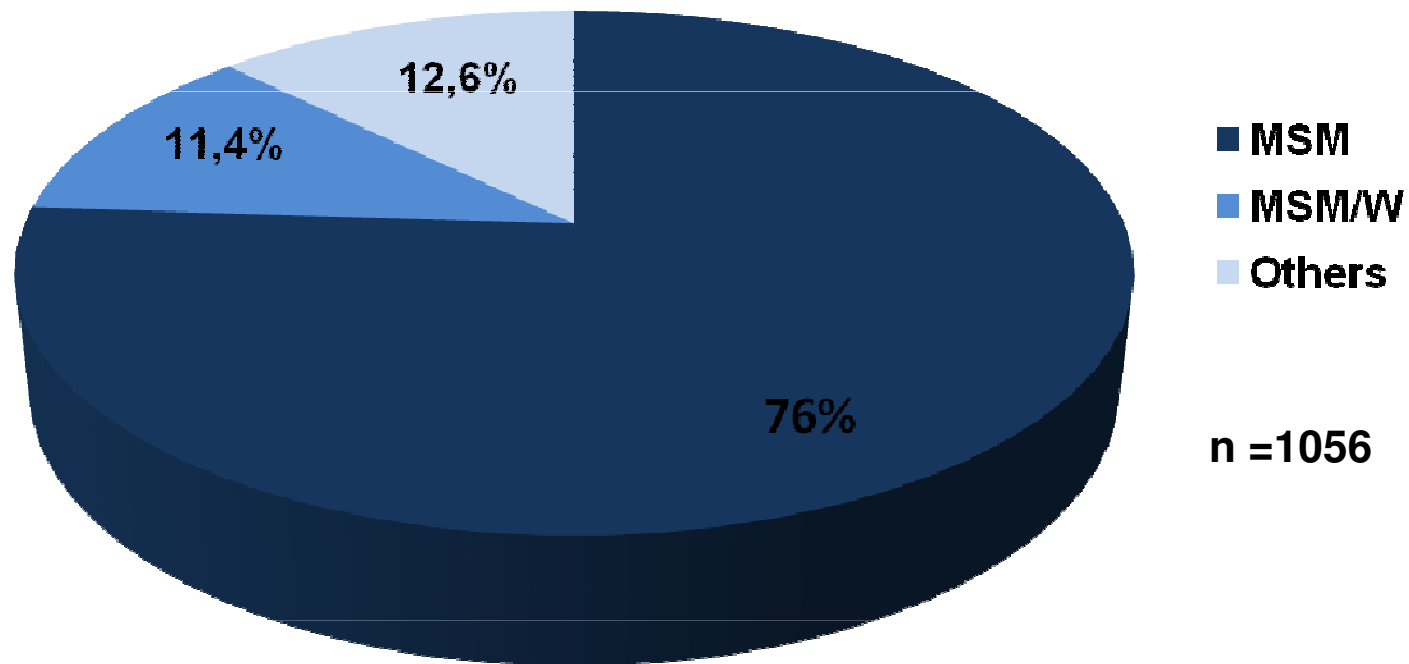
Questionnaire collecting socio-demographic data, reasons for testing and sexual behavior

RAPID TEST
RESULTS IN 30 MINUTES
ANONYMOUS
CONFIDENTIAL
FREE



CHECKPOINTLX

APRIL 2011 TO JANUARY 2012



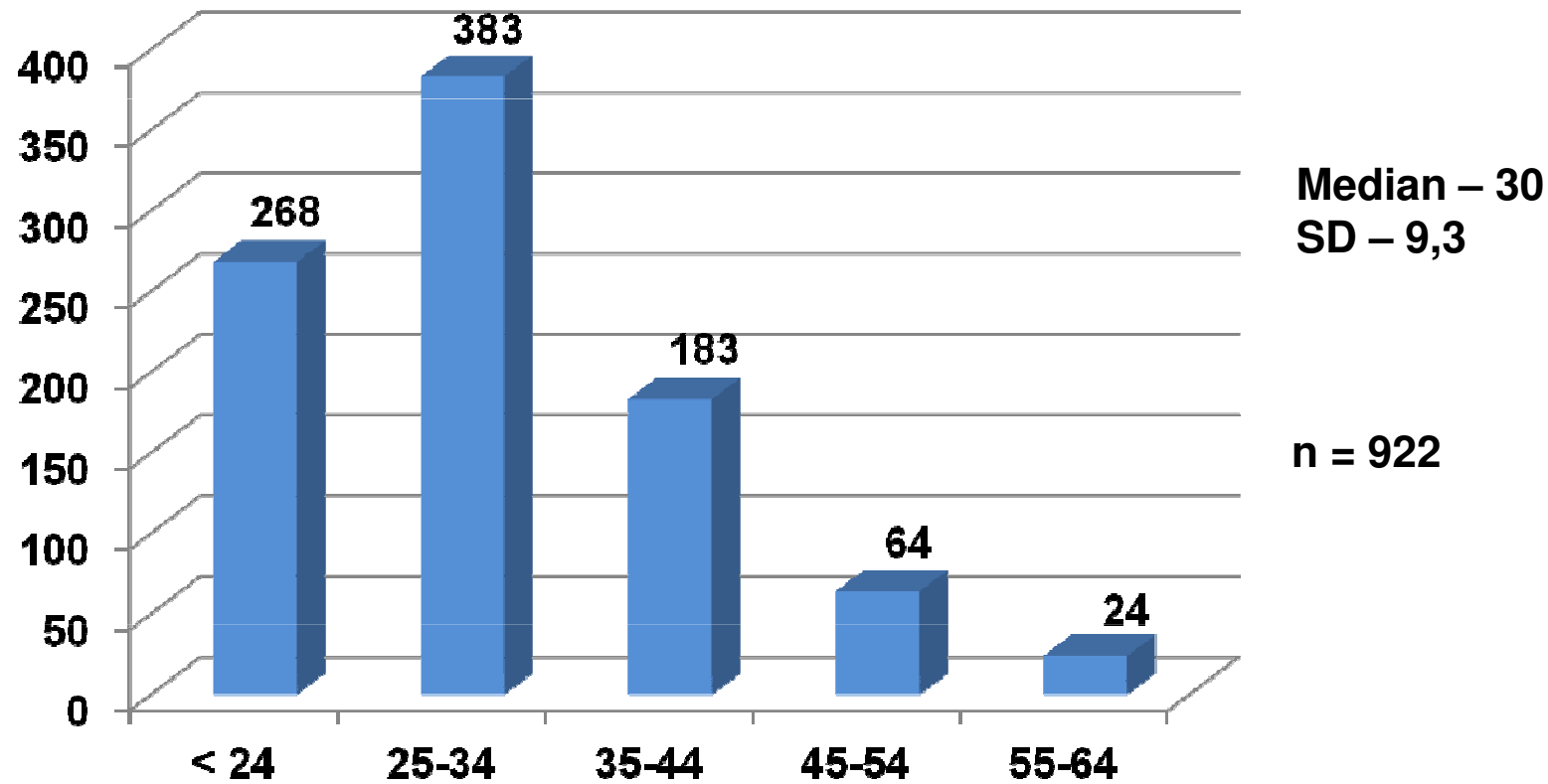
RAPID TEST
RESULTS IN 30 MINUTES
ANONYMOUS
CONFIDENTIAL
FREE

CHECK
POINT
LX

CHECKPOINTLX

APRIL 2011 TO JANUARY 2012

AGE GROUP (MSM AND MSM/W)

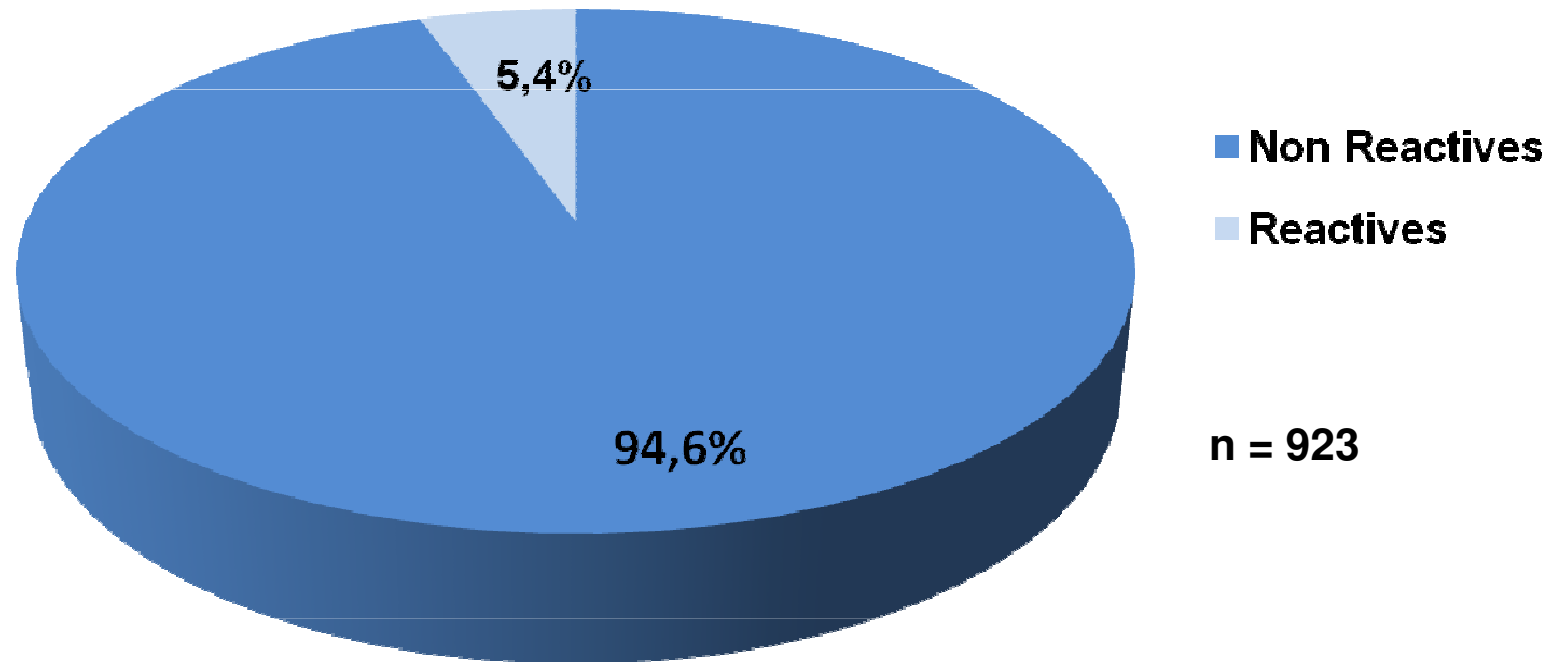


RAPID TEST
RESULTS IN 30 MINUTES
ANONYMOUS
CONFIDENTIAL
FREE



CHECKPOINTLX

APRIL 2011 TO JANUARY 2012
RESULTS MSM AND MSM/W



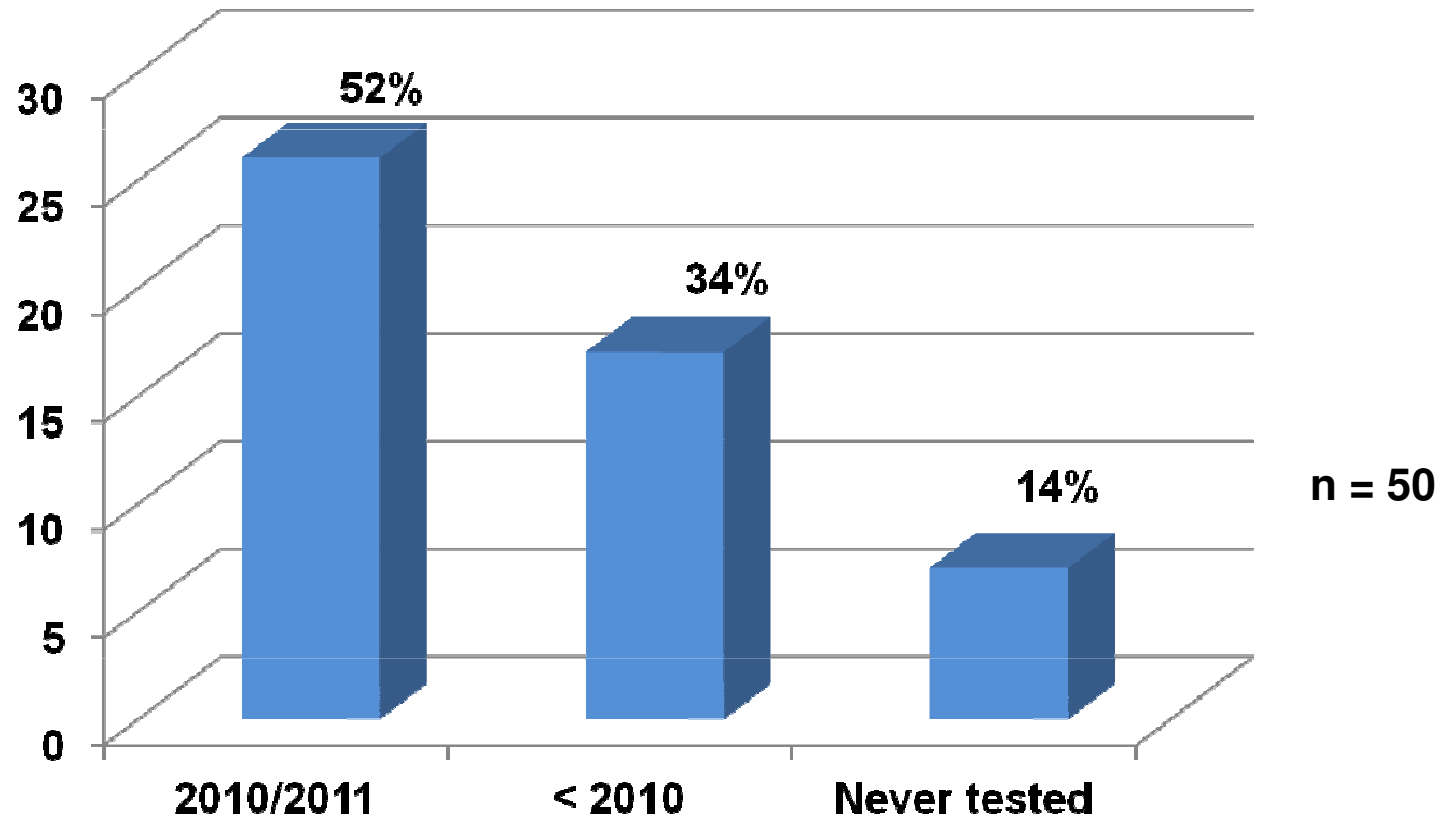
RAPID TEST
RESULTS IN 30 MINUTES
ANONYMOUS
CONFIDENTIAL
FREE



CHECKPOINTLX

APRIL 2011 TO JANUARY 2012

TESTING EXPERIENCE – REACTIVE MSM

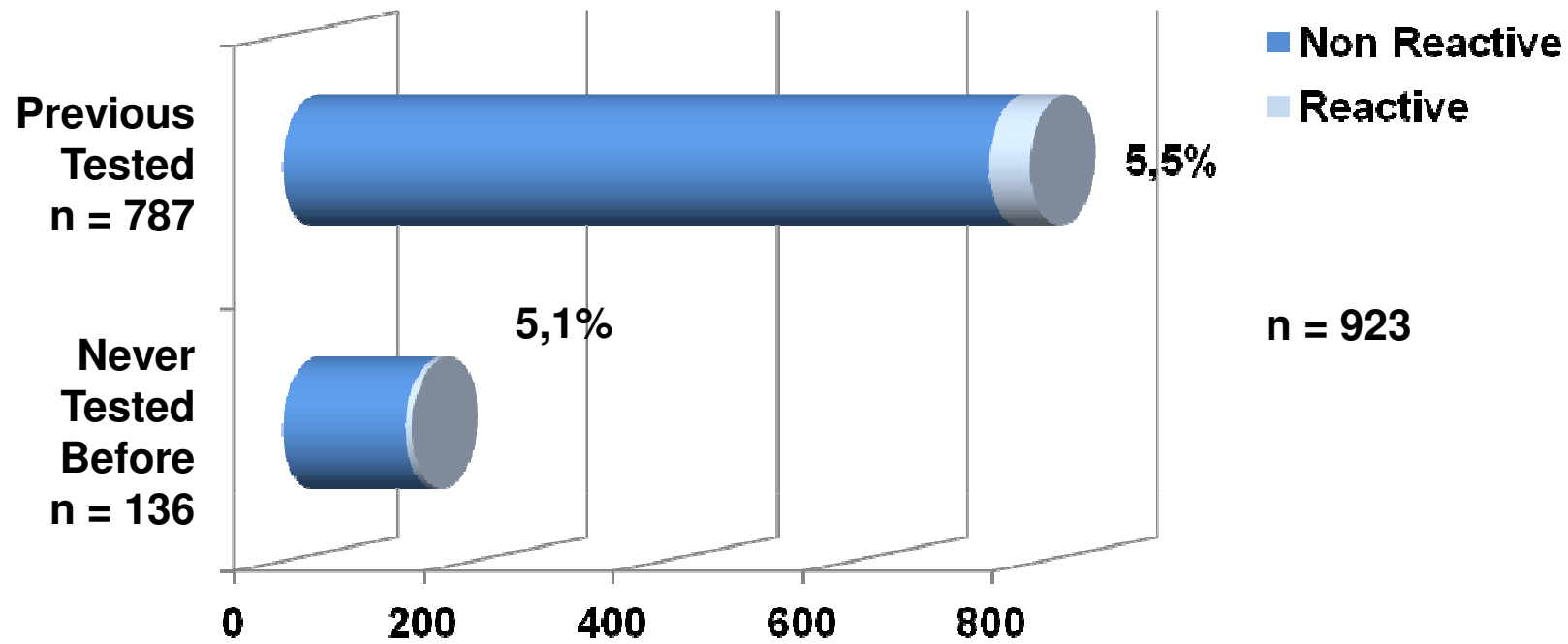


RAPID TEST
RESULTS IN 30 MINUTES
ANONYMOUS
CONFIDENTIAL
FREE



CHECKPOINTLX

APRIL 2011 TO JANUARY 2012
TESTING EXPERIENCE



RAPID TEST
RESULTS IN 30 MINUTES
ANONYMOUS
CONFIDENTIAL
FREE



CHECKPOINTLX

APRIL 2011 TO JANUARY 2012

NEVER TESTED BEFORE

Age	Total tests performed	Reactives
< 20	30	0
20-24	45	2
25-34	31	1
35-44	19	1
45-54	8	3
55-64	3	0

n = 136

RAPID TEST
RESULTS IN 30 MINUTES
ANONYMOUS
CONFIDENTIAL
FREE



CHECKPOINTLX

APRIL 2011 TO JANUARY 2012

REFERRALS OF MSM WITH REACTIVE RESULT

Within 1 week – Infectious disease out patient clinic

Counselor available to accompany MSM to 1st appointment

40 MSM accepted referral, 21 of which
were accompanied

RAPID TEST
RESULTS IN 30 MINUTES
ANONYMOUS
CONFIDENTIAL
FREE



CHECKPOINTLX

APRIL 2011 TO JANUARY 2012

REFERRALS OF MSM WITH REACTIVE RESULT

Immunological evaluation (1st appointment)			
	Mean	Median	St. Deviation
CD4 (n=34)	514/mm³	466/mm³	249/mm³
Viral Load (n=34)	5,32 log¹⁰	4,74 log¹⁰	0,74 log¹⁰

ART was started in 12 patients.

RAPID TEST
RESULTS IN 30 MINUTES
ANONYMOUS
CONFIDENTIAL
FREE



STRATEGIES TO REACH VISITORS OF CRUISING AREAS BEACH 19, SOUTH OF LISBON



RAPID TEST
RESULTS IN 30 MINUTES
ANONYMOUS
CONFIDENTIAL
FREE



STRATEGIES TO REACH VISITORS OF CRUISING AREAS NATIONAL STADIUM, OUTSKIRTS OF LISBON



RAPID TEST
RESULTS IN 30 MINUTES
ANONYMOUS
CONFIDENTIAL
FREE



STRATEGIES TO REACH VISITORS OF CRUISING AREAS REST AREA, HIGHWAY LISBON - OPORTO



RAPID TEST
RESULTS IN 30 MINUTES
ANONYMOUS
CONFIDENTIAL
FREE

**CHECK
POINT**
LX

CONCLUSIONS

The percentage of reactive results was high – 5,4%

A large majority (80%) of MSM with a reactive result accepted to be referred and more than half accepted the company of a member of the team

Six patients were considered lost of follow up – strategies are planned to reconnect those patients

ART was started on 12 patients (35%) reinforcing the importance of early detection and referral to care

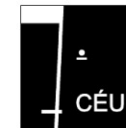
RAPID TEST
RESULTS IN 30 MINUTES
ANONYMOUS
CONFIDENTIAL
FREE

CHECK
POINT
LX

INSTITUTIONAL PARTNERS



COMMUNITY PARTNERS



SPONSORS

Abbott ANF Boehringer-Ingelheim BMS Gilead Janssen MSD ViiV

RAPID TEST
RESULTS IN 30 MINUTES
ANONYMOUS
CONFIDENTIAL
FREE

